

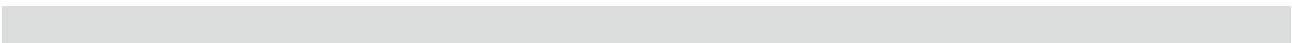
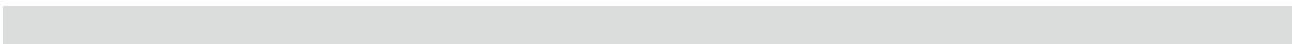
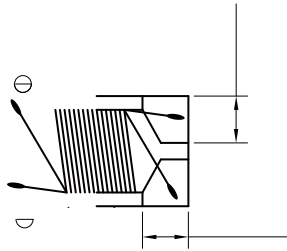
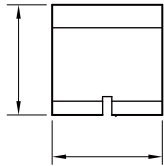
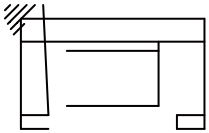
BCMA Series

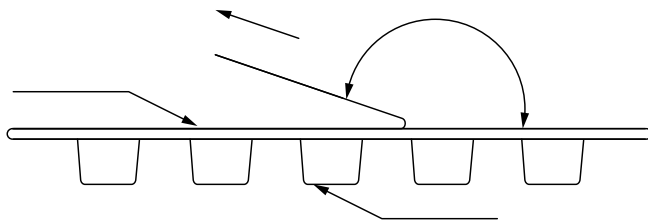
FEATURES

-
- #
- ° -# j
- j

APPLICATION

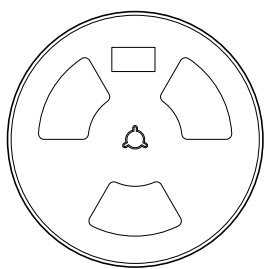
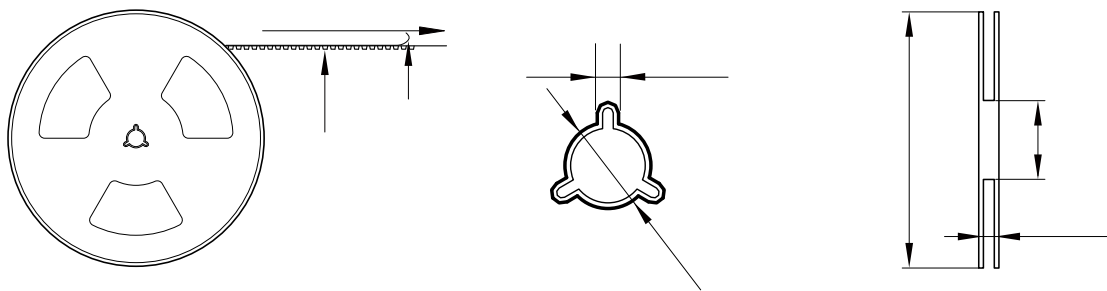
- U\



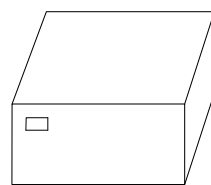


The peel force of top cover tape shall be between 0.14 to 0.78 N

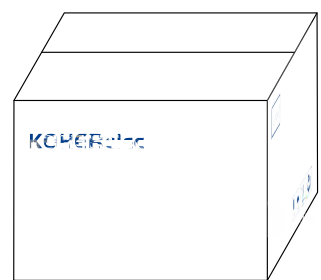
:



2000 Pcs/Reel



5 Reel /Inner box(10K Pcs)



8 Inner box/Carton box(80K Pcs)

:

•

•

•

•

•

•

•

•