

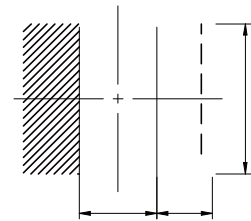
NRSE Series

CHARACTERISTICS

- Magnetic resin for higher current and semi-magnetically shielded
- Quantity: 2000pcs

APPLICATION

- DC/DC converter
- LC filter



(μH)	Tolerance	Saturation		
		(A)	(A)	(m)
		3.00	2.90	21
		2.20	2.20	33
		2.05	2.10	40
		1.90	2.00	48
		1.62	1.85	55
		1.50	1.70	68
		1.20	1.55	75
		1.05	1.35	100
		0.90	1.25	120
		0.80	1.10	160
		0.75	1.00	190
		0.60	0.89	265
		0.45	0.72	430
		0.42	0.55	630
		0.35	0.45	800
		0.36	0.46	875
		0.27	0.35	1450

Operating temperature: -40°C ~ +125°C

Temperature rise current: the actual value of DC current when the temperature rise is T40C

Saturation Current that will cause initial inductance to drop approximately 30%

